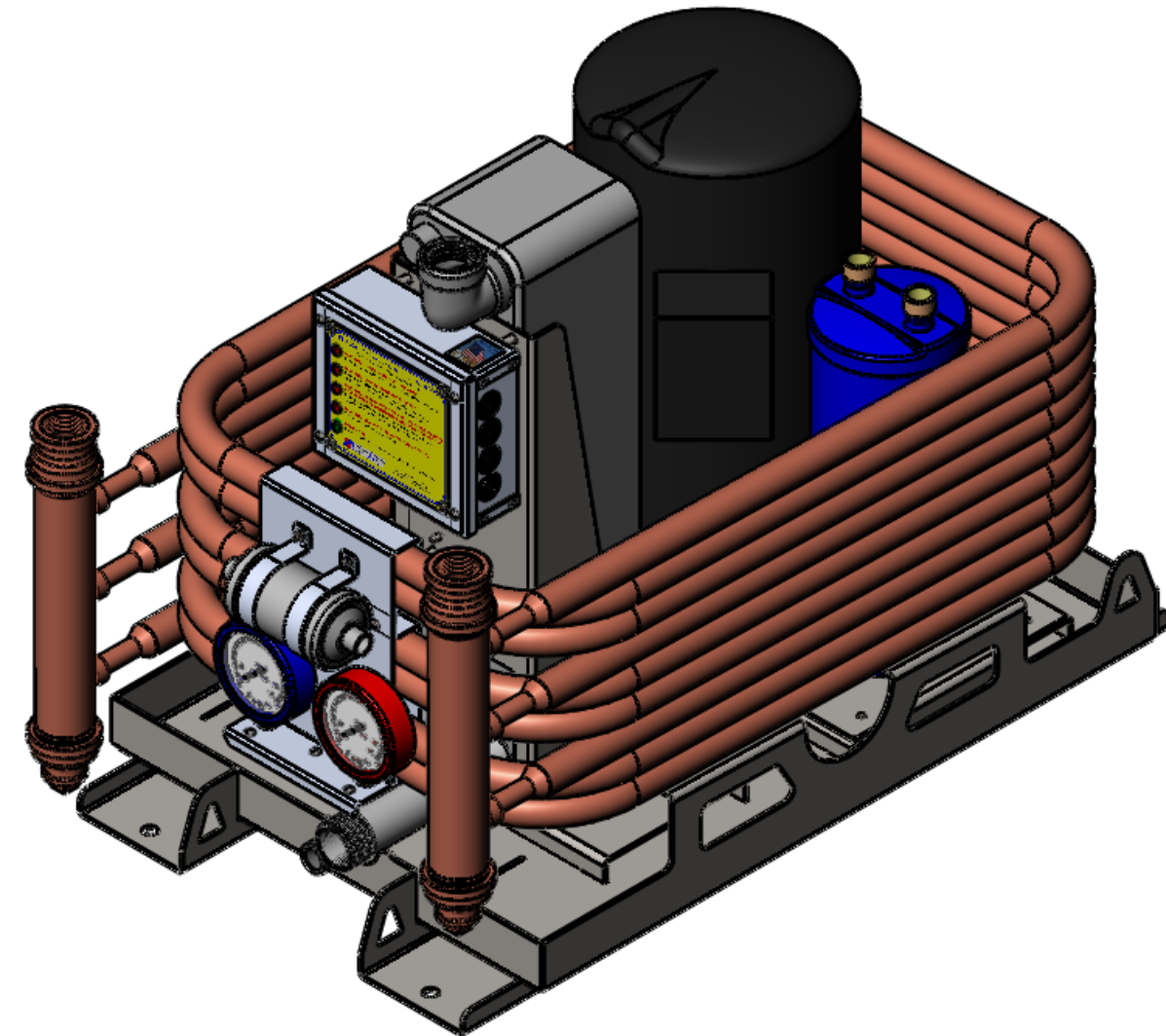


FLAGSHIP MARINE, INC.				
REV.	ZONE	DESCRIPTION	DATE	ENG APPROVAL
01	-	INITIAL CHECK-IN	7/20/2011	-



ITEM NO.	PART NUMBER	DESCRIPTION	20065-001/QTY.
30	ZR81KC-TF-5950	COMPRESSOR, 3PH, 60 Hz, 200-230V	1
29	V10-414080-170	REVERSING VALVE LESS COIL, V10-414080-170, RANCO	1
28	LLD165S	FILTER DRIER, LIQUID LINE, TYPE LLD165S, SUPCO	1
27	FM60206	EVAPORATOR, CHILLED WATER, FM96CW & FM120CW	1
26	8NWLOS	8-32 LOCK WASHER SS	4
25	8CNMES	8-32 MACHINE SCREW NUT SS	4
24	80279-001	WELDMENT, MANIFOLD, 1 1/2" PIPE X 11.50"L, FM96CW	2
23	80265-001	WELDMENT, BASE, CHILLER, FM96CW & FM120CW	1
22	72396	#8-32 x 3/8" PHMS 18-8 SS	10
21	70666-001	FABRICATION, STRAP, FILTER DRIER, CHILLER, FM96CW & FM120CW	2
20	70664-001	FABRICATION, PANEL, LIQUID GAUGE & FILTER DRIER, CHILLER, FM96CW & FM120CW	1
19	70656-001	FABRICATION, BRACKET, LIQUID GAUGE & FILTER DRYER, CHILLER, FM60CW	1
18	70654-001	FABRICATION, BRACKET, EVAPORATOR, CHILLER, FM60CW	1
17	60071-001	STANDOFF, .385 ID X 1.406 OD X 1.00 THK, 70 DURO EPDM BLACK	4
16	60070-001	WASHER, .385 ID X 1.406 OD X .25 THK, 60 DURO EPDM BLACK	4
15	60053-001	SUCTION ACCUMULATOR, CHILLED WATER, FM96CW & FM120CW	1
14	60045-002	PRESSURE GAUGE, LOW SIDE, BLUE, YELLOW JACKET 49002	1
13	60045-001	PRESSURE GAUGE, HIGH SIDE, RED, YELLOW JACKET49001	1
12	50008-001	FABRICATION, TUBING, CHILLER, FM120CW	3
11	4830K248	1 1/4" NPT NIPPLE, 6"L, 304 SS	1
10	4464K66	1 1/4" NPT COUPLING, 304 SS	1
9	4464K17	1 1/4" NPT 90 DEG ELBOW, 304 SS	1
8	4429K746	REDUCING COUPLING, 1 1/4" NPT - 3/4" NPT, CAST BRASS	2
7	4429K745	REDUCING COUPLING, 1 1/2" NPT - 1 1/4" NPT, CAST BRASS	2
6	4429K315	PLUG, 3/4" NPT, CAST BRASS	2
5	37NWLOS	3/8 LOCK WASHER SS	8
4	37N125WFES	3/8 X 1-1/4 FENDER WASHER SS	4
3	37N125WFES	3/8 X 1-1/4 FENDER WASHER SS	4
2	37CNFHS	3/8 HEX FINISH NUT SS	8
1	20014-001	ASSEMBLY, ENCLOSURE, LOW VOLTAGE, CHILLERS	1

Flagship Marine
 Components
 Quality Direct
 Flagship

FLAGSHIP MARINE, INC.
 2427 SE DIXIE HIGHWAY
 STUART | FLORIDA | 34996 | USA
 (772) 283-1609 | (800) 316-6426
 FAX (772) 283-4611

PROPRIETARY AND CONFIDENTIAL

THIS DOCUMENT CONTAINS INFORMATION PROPRIETARY TO FLAGSHIP MARINE, INC. NO PART MAY BE REPRODUCED, USED IN ANY FORM, OR STORED ELECTRONICALLY WITHOUT THE WRITTEN PERMISSION OF FLAGSHIP MARINE, INC.

UNLESS OTHERWISE SPECIFIED:		NAME	DATE
DIMENSIONS ARE IN INCHES		DRAWN	SWC 2/4/2011
TOLERANCES:		CHECKED	TCM -
FRACTIONS ± 1/32		ENG APPR.	TCM -
ANG: MACH ± 0°30' BEND ± 2°		MFG APPR.	TCM -
DECIMALS .XX ± .01		Q.A.	EAS -
.XXX ± .005			
HOLE Ø .XX ± .005			
INTERPRET GEOMETRIC TOLERANCING PER: ASME Y14.5M			
MATERIAL		PERP STRAIGHTNESS	∟ .003/IN
		FLATNESS	≡ .005/IN
		THREADS:	
		EXTERNAL - CLASS 2A	
		INTERNAL - CLASS 2B	
FINISH		MACHINED SURFACES:	√ U.O.S
NEXT ASSY	USED ON		
APPLICATION	DO NOT SCALE DRAWING		

FLAGSHIP MARINE, INC. BILL OF MATERIALS

TITLE: ASSEMBLY, CHILLER, FM96CW, 32L X 19.50W X 23H

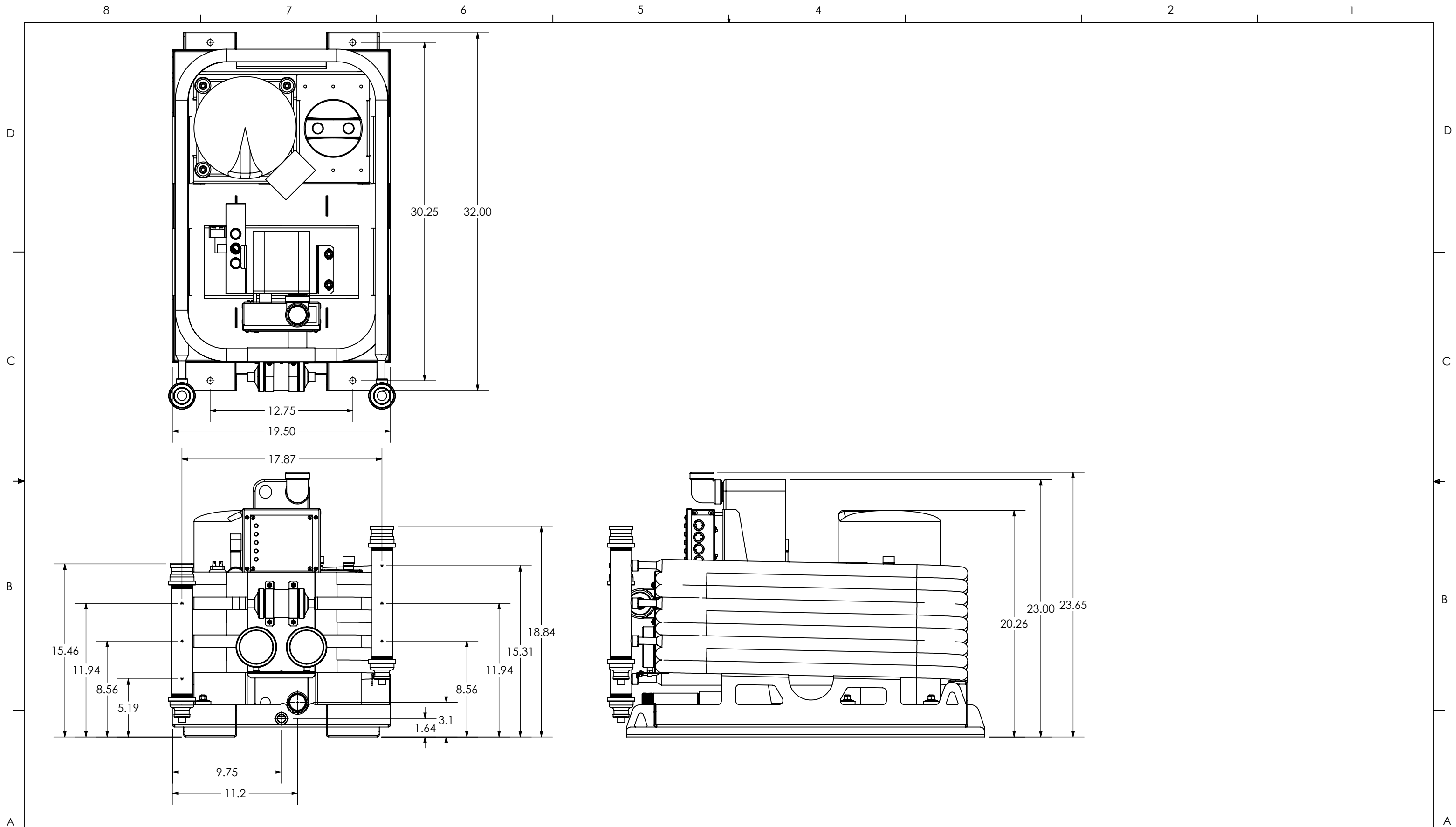
PART NO. 20065-001

SIZE DWG. NO. REV
B FM20065 **01**

OLD PART NO. -

SCALE: 1:6 WGT: 476.53 LBS SHEET 1 OF 2

2. PREFERRED LIMITS AND FITS PER ANSI B4.1 (INCHES).
 1. DIMENSIONING & TOLERANCING PER ASME Y14.5M.
 NOTES:



Flagship Marine
 Commercial Quality Factory Direct Prices
 2427 SE DIXIE HIGHWAY | STUART | FLORIDA | 34996 | USA
 (772) 283-1609 | (800) 316-6426 FAX (772) 283-4611

DRAWN -
 CHECKED -
 ENG APPR. -

SIZE B
 WGT: 476.53 LBS

DRAWING NO. FM20065
 SCALE: 1:8
 SHEET 2 OF 2

REV 01