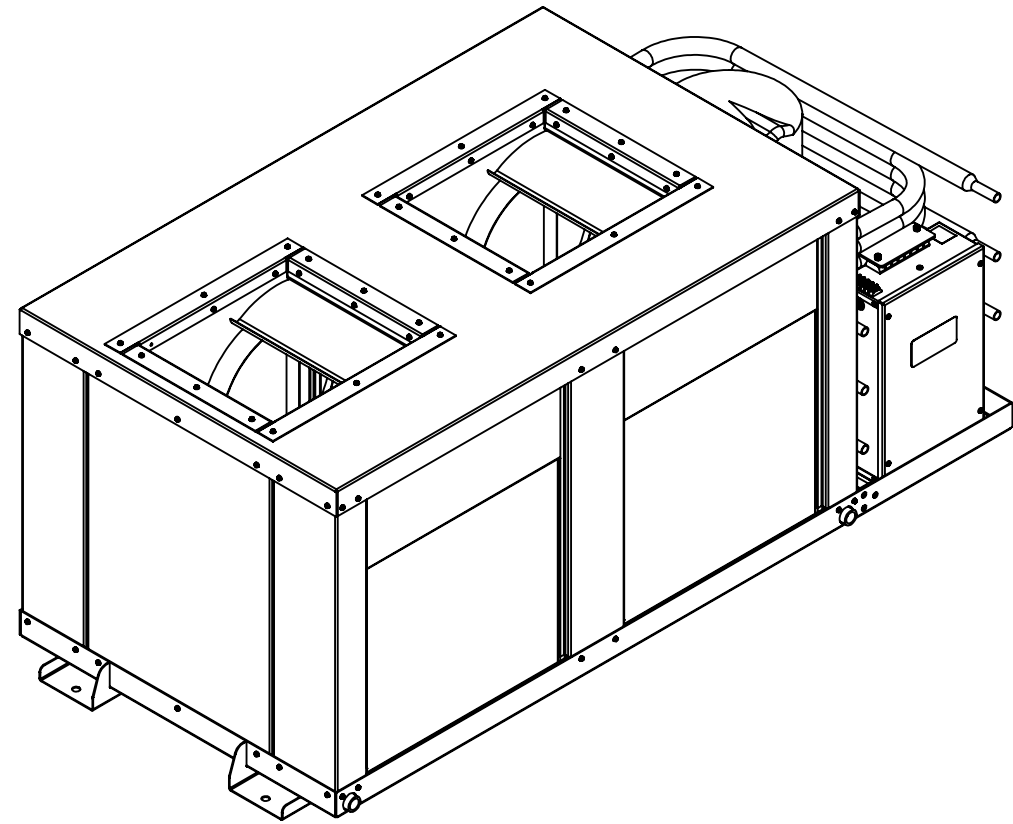


PART NUMBER	DESCRIPTION	FLAGSHIP MARINE, INC.				
		REV.	ZONE	DESCRIPTION	DATE	ENG APPROVAL
20052-001	ASSEMBLY, AIR CONDITIONER FM96S-H, 62.75L X 33.88W X 26.13H, 230V TOP					
20052-011	ASSEMBLY, AIR CONDITIONER FM96S-H, 62.75L X 33.88W X 26.13H, 230V TOP, WITH OPTIONAL HEAT					



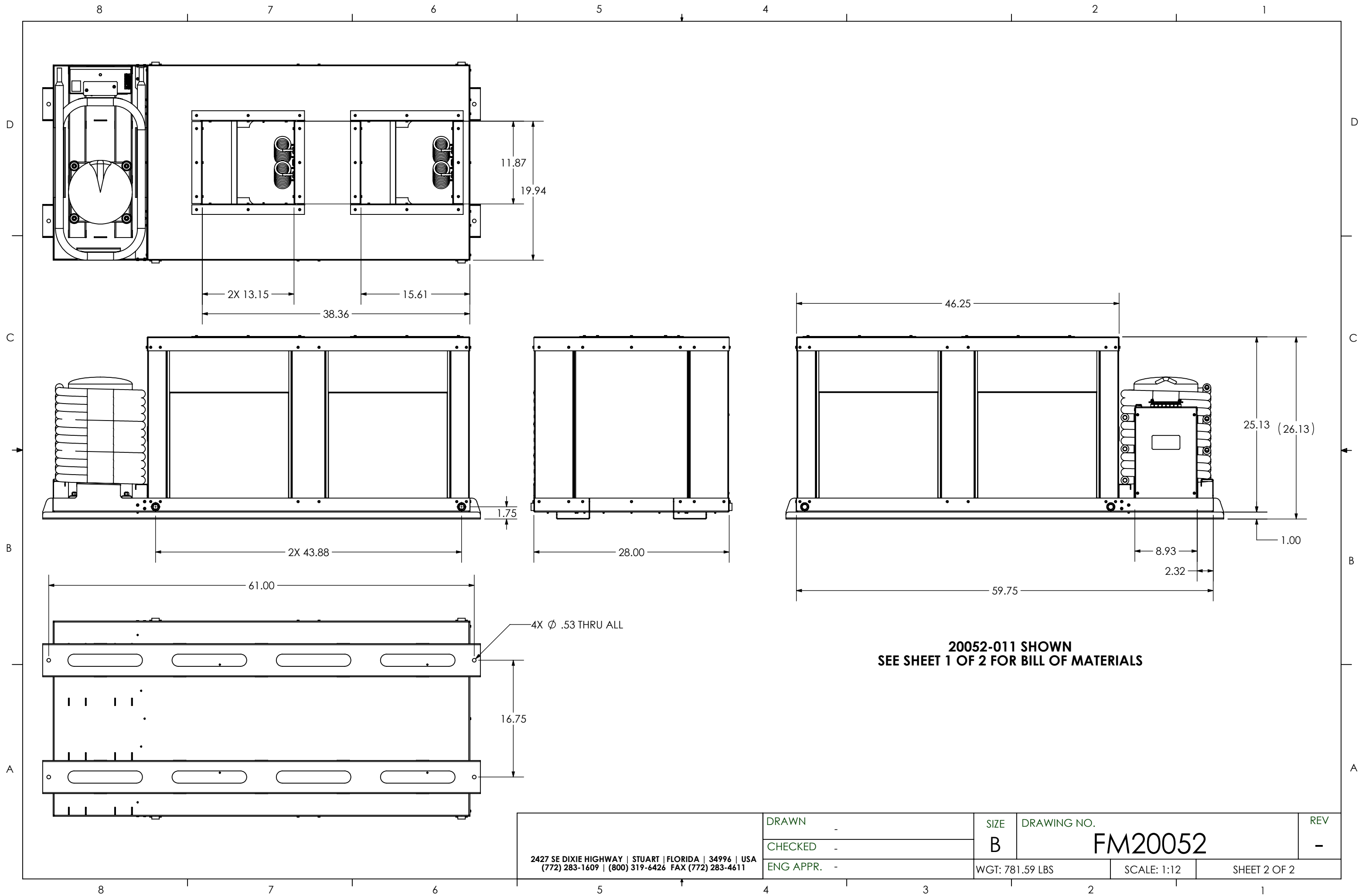
**20052-011 SHOWN  
SEE SHEET 2 OF 2 FOR DIMENSIONS**

32	ZR81KC-TF-5950	COMPRESSOR, 3PH, 60 Hz, 200-230V	1	1
31	Selected Wide FW 0.375		4	4
30	Regular LW 0.375		4	4
29	HNUT 0.3750-16-D-N		4	4
28	80054-002	WELDMENT, LID, AIR CONDITIONER, FMAC120S-H	1	1
27	80053-002	WELDMENT, DRAIN PAN, EVAPORATOR, FMAC60S-H	2	2
26	80052-002	WELDMENT, BASE, AIR CONDITIONER, FM96S-H / FM120S-H	1	1
25	70169-001	FABRICATION, LID, ENCLOSURE, HEATER COIL, AIR CONDITIONER, FM48S - FM180S	-	2
24	70168-001	FABRICATION, ENCLOSURE, HEATER COIL, AIR CONDITIONER, FM48S - FM180S	-	2
23	70158-001	FABRICATION, PANEL, CLOSE OUT, AIR CONDITIONER, FM48S	4	4
22	70156-012	FABRICATION, PANEL, CORNER, AIR CONDITIONER, FM48S-H & FM96S-H	1	1
21	70156-004	FABRICATION, PANEL, CORNER, AIR CONDITIONER, FM48S-H & FM96S-H	1	1
20	70156-003	FABRICATION, PANEL, CORNER, AIR CONDITIONER, FM48S-H & FM96S-H	2	2
19	70081-001	FABRICATION, BRACKET, BLOWER, AIR CONDITIONER, FM48S/60S/72S/96S/120S/180S-H	4	4
18	70078-001	FABRICATION, PANEL, ACCESS, AIR CONDITIONER, FMAC60S-H	2	2
17	70077-001	FABRICATION, PANEL, BIFECTOR, AIR CONDITIONER, FM48S-H & FM96S-H	2	2
16	70075-001	FABRICATION, BRACKET, WATER COIL, FMAC60/120/180S-H	1	1
15	70067-101	FABRICATION, BRACKET, BLOWER 1XJY2, AIR HANDLER	4	4
14	70067-001	FABRICATION, BRACKET, BLOWER 1XJY2, AIR HANDLER	4	4
13	60215-001	EVAPORATOR, 24000 MBTU, 16HX17W, 3 ROW	4	4
12	60131-001	GROMMET, 11/16" PUSH-IN LOCKING, NYLON	3	5
11	60071-001	STANDOFF, .385 ID X 1.406 OD X 1.00 THK, 70 DURO EPDM BLACK	4	4
10	60070-001	WASHER, .385 ID X 1.406 OD X .25 THK, 60 DURO EPDM BLACK	4	4
9	60062-001	THERMAL LIMIT SWITCH, 130 DEGREE	-	2
8	60060-001	THERMAL LIMIT SWITCH, 110 DEGREE	-	4
7	60039-001	HEATER ELEMENT, COIL, 1" L, 8MM, 3000W, 240VAC, DBL END THRD BULKHEAD	-	4
6	60014-001	BLOWER, PSC, FORWARD CURVE, DIRECT DRIVE, WHEEL DIA 13"	2	2
5	50011-001	FABRICATION, TUBING, AIR CONDITIONER, FM60S-H	3	3
4	20016-001	ASSEMBLY, CONTROL BOX, SELF CONTAINED, A/C, 48K-120K UNIVERSAL	1	1
3	1131943	#8-18 X 1/2" HWH #3 PT SELF DRILLING SCREW, 410 SS	118	138
2	72396	#8-32 x 3/8" PHMS 18-8 SS	-	8
1	41424	RIVET 3/16" DIA .062-.125" GRIP RANGE, SSB62S STAINLESS	37	37
ITEM NO.	PART NUMBER	DESCRIPTION	20052-001/QTY.	20052-011/QTY.

**FLAGSHIP MARINE, INC. BILL OF MATERIALS**

<p><b>FLAGSHIP MARINE, INC.</b> 2427 SE DIXIE HIGHWAY STUART   FLORIDA   34996   USA (772) 283-1609   (800) 319-6426 FAX (772) 283-4611</p> <p><b>PROPRIETARY AND CONFIDENTIAL</b></p> <p>THIS DOCUMENT CONTAINS INFORMATION PROPRIETARY TO FLAGSHIP MARINE, INC. NO PART MAY BE REPRODUCED, USED IN ANY FORM, OR STORED ELECTRONICALLY WITHOUT THE WRITTEN PERMISSION OF FLAGSHIP MARINE, INC.</p>			UNLESS OTHERWISE SPECIFIED: DIMENSIONS ARE IN INCHES TOLERANCES: FRACTIONS ± 1/32 ANG: MACH ± 0°30' BEND ± 2° DECIMALS .XX ± .01 .XXX ± .005 HOLE Ø .XX ± .005		NAME	DATE	<p>TITLE: ASSEMBLY, AIR CONDITIONER FM96S-H, 62.75L X 33.88W X 26.13H</p> <p>PART NO. 20052-0XX</p> <p>SIZE DWG. NO. REV <b>B</b> FM20052 -</p> <p>OLD PART NO. -</p> <p>SCALE: 1:12   WGT: 781.60 LBS   SHEET 1 OF 2</p>	
			INTERPRET GEOMETRIC TOLERANCING PER: ASME Y14.5M		DRAWN	SWC		5/7/2009
			MATERIAL		CHECKED	TCM		-
			FINISH		ENG APPR.	TCM		-
	NEXT ASSY	USED ON		MFG APPR.	TCM	-		
	APPLICATION	DO NOT SCALE DRAWING		Q.A.	EAS	-		
				PERP STRAIGHTNESS	∓	.003/IN		
				FLATNESS	∓	.005/IN		
				THREADS:				
				EXTERNAL - CLASS 2A				
				INTERNAL - CLASS 2B				
				MACHINED SURFACES: √		U.O.S		

- NOTES:
- NO SHARP EDGES PERMITTED.
  - PREFERRED LIMITS AND FITS PER ANSI B4.1 (INCHES).
  - DIMENSIONING & TOLERANCING PER ASME Y14.5M.



11.87  
19.94  
2X 13.15  
38.36  
15.61

46.25  
25.13 (26.13)  
1.00  
8.93  
2.32  
59.75

1.75  
28.00  
2X 43.88

61.00  
16.75  
4X Ø .53 THRU ALL

**20052-011 SHOWN  
SEE SHEET 1 OF 2 FOR BILL OF MATERIALS**

2427 SE DIXIE HIGHWAY   STUART   FLORIDA   34996   USA (772) 283-1609   (800) 319-6426 FAX (772) 283-4611	DRAWN -	SIZE	DRAWING NO.	REV
	CHECKED -	B	FM20052	-
	ENG APPR. -	WGT: 781.59 LBS	SCALE: 1:12	SHEET 2 OF 2