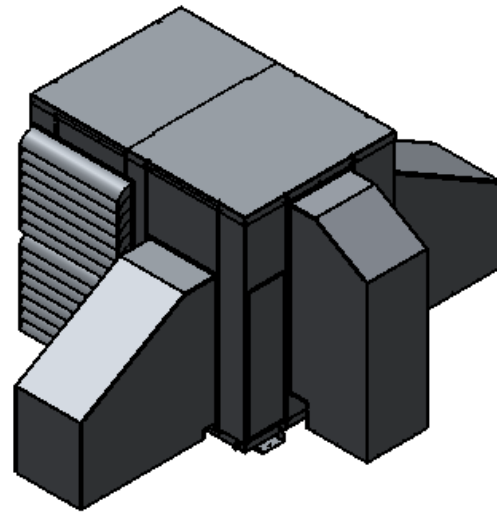


PART NUMBER	DESCRIPTION
20106-001	ASSEMBLY, SELF CONTAINED, AIR COOLED, FM120AC, 230V
20106-011	ASSEMBLY, SELF CONTAINED, AIR COOLED, FM120AC, 230V, WITH OPTIONAL HEAT

FLAGSHIP MARINE, INC.				
REV.	ZONE	DESCRIPTION	DATE	ENG APPROVAL
01	-	INITIAL CHECK-IN	7/13/2011	-



48	ZRT08KC-TF-5950	COMPRESSOR, 3PH, 60 Hz, 230V	1	1
47	8NWLOS	8-32 LOCK WASHER SS	16	16
46	8CNMES	8-32 MACHINE SCREW NUT SS	16	16
45	80165-002	WELDMNT, BASE, SELF CONTAINED, AIR COOLED, FM120AC	1	1
44	80158-001	WELDMNT, SHROUD PANEL, FAN, SELF CONTAINED, AIR COOLED, FM120AC	1	1
43	80059-001	WELDMNT, PANEL, LOUVER, SELF CONTAINED, AIR COOLED, UNIVERSAL	6	6
42	70589-001	FABRICATION, PANEL, ACCESS, CONTROL BOX, SELF CONTAINED, AIR COOLED, FM120AC	2	2
41	70588-001	FABRICATION, BRACKET, BLOWER, SELF CONTAINED, AIR COOLED, FM120AC	1	1
40	70587-001	FABRICATION, PLENUM, RETURN AIR, SELF CONTAINED, AIR COOLED, FM120AC	2	2
39	70586-001	FABRICATION, PLENUM, SUPPLY AIR, SELF CONTAINED, AIR COOLED, FM120AC	1	1
38	70585-001	FABRICATION, PANEL, BLOWER, SELF CONTAINED, AIR COOLED, FM120AC	1	1
37	70584-001	FABRICATION, PANEL, BIVECTOR, SELF CONTAINED, AIR COOLED, FM120AC	1	1
36	70583-002	FABRICATION, PANEL, CORNER, SELF CONTAINED, AIR COOLED, FM120AC	1	1
35	70583-001	FABRICATION, PANEL, CORNER, SELF CONTAINED, AIR COOLED, FM120AC	1	1
34	70582-002	FABRICATION, PANEL, CENTER, SELF CONTAINED, AIR COOLED, FM120AC	1	1
33	70582-001	FABRICATION, PANEL, CENTER, SELF CONTAINED, AIR COOLED, FM120AC	1	1
32	70581-002	FABRICATION, PANEL, CLOSEOUT, SELF CONTAINED, AIR COOLED, FM120AC	1	1
31	70581-001	FABRICATION, PANEL, CLOSEOUT, SELF CONTAINED, AIR COOLED, FM120AC	1	1

30	70580-001	FABRICATION, PANEL, ACCESS, SELF CONTAINED, AIR COOLED, FM120AC	2	2
29	70579-002	FABRICATION, PANEL, CORNER, SELF CONTAINED, AIR COOLED, FM120AC	1	1
28	70579-001	FABRICATION, PANEL, CORNER, SELF CONTAINED, AIR COOLED, FM120AC	1	1
27	70551-001	FABRICATION, LID, SELF CONTAINED, AIR COOLED, FM60AC	1	1
26	70456-101	FABRICATION, BRACKET, BLOWER 1XJY2, AIR HANDLER	4	4
25	70456-001	FABRICATION, BRACKET, BLOWER 1XJY2, AIR HANDLER	4	4
24	70169-001	FABRICATION, LID, ENCLOSURE, HEATER COIL, AIR CONDITIONER, FM48S-FM180S	-	2
23	70168-001	FABRICATION, ENCLOSURE, HEATER COIL, AIR CONDITIONER, FM48S-FM180S	-	2
22	70140-001	FABRICATION, MOTOR MOUNT, AIR HANDLER	2	2
21	60216-001	EVAPORATOR, 36000 MBTU, 17.50HX18.13W, 3 ROW	12	12
20	60131-001	GROMMET, 11/16" PUSH-IN LOCKING, NYLON	3	5
19	60071-001	STANDOFF, .385 ID X 1.406 OD X 1.00 THK, 70 DURO EPDM BLACK	4	4
18	60070-001	WASHER, .385 ID X 1.406 OD X .25 THK, 60 DURO EPDM BLACK	4	4
17	60062-001	THERMAL LIMIT SWITCH, 130 DEGREE	-	2
16	60060-001	THERMAL LIMIT SWITCH, 110 DEGREE	-	4
15	60035-001	HEATER ELEMENT, COIL, 74"L, 8MM, 4000W, 230VAC, DBL END THRD BULKHEAD	-	4
14	60029-001	MOTOR, FAN, PSC, 3/4 HP, 1075, 230V, 48YZ, TEAO	2	2
13	60014-001	BLOWER, PSC, FORWARD CURVE, DIRECT DRIVE, WHEEL DIA 13"	2	2
12	50036-001	DETAIL, FAN HUB, HEX, 3/8IN SHAFT, AIR COOLED	2	2
11	4C903	FAN BLADE, 24IN DIA., 6360 CFM, 3/4 HP, PITCH 27 DEGREES	2	2
10	37NWLOS	3/8 LOCK WASHER SS	4	4
9	37N125WFES	3/8 X 1-1/4 FENDER WASHER SS	4	4
8	37CNFHS	3/8 HEX FINISH NUT SS	4	4
7	25NWLOS	1/4-20 LOCK WASHER SS	8	8
6	25CNFHS	1/4-20 MACHINE SCREW NUT SS	8	8
5	25C62HCSS	1/4-20 HEX CAP SCREW SS	8	8
4	20035-001	ASSEMBLY, CONTROL BOX, SELF CONTAINED, AIR COOLED, UNIVERSAL	1	2
3	1131943	#8-18 X 1/2" HWH #3 PT SELF DRILLING SCREW, 410 SS	387	427
2	72396	#8-32 x 3/8" PHMS 18-8 SS	24	32
1	41424	RIVET 3/16" DIA .062-.125" GRIP RANGE, SSB62S STAINLESS	73	79

ITEM NO.	PART NUMBER	DESCRIPTION	20106-001/QTY.	20106-011/QTY.
FLAGSHIP MARINE, INC. BILL OF MATERIALS				

ITEM NO.	PART NUMBER	DESCRIPTION	20106-001/QTY.	20106-011/QTY.
FLAGSHIP MARINE, INC. BILL OF MATERIALS				

FLAGSHIP MARINE, INC.
2427 SE DIXIE HIGHWAY
STUART | FLORIDA | 34996 | USA
(772) 283-1609 | (800) 316-6426
FAX (772) 283-4611

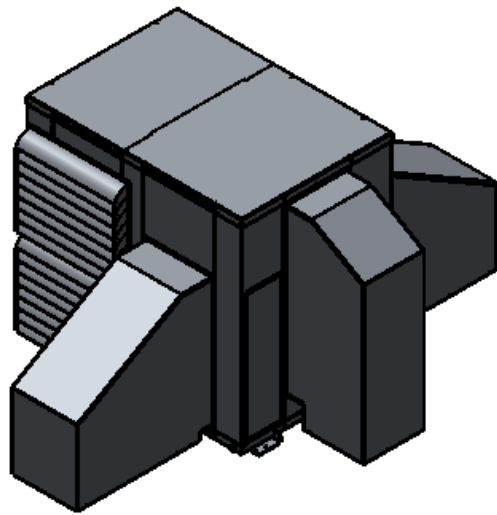
PROPRIETARY AND CONFIDENTIAL
THIS DOCUMENT CONTAINS INFORMATION PROPRIETARY TO FLAGSHIP MARINE, INC. NO PART MAY BE REPRODUCED, USED IN ANY FORM, OR STORED ELECTRONICALLY WITHOUT THE WRITTEN PERMISSION OF FLAGSHIP MARINE, INC.

UNLESS OTHERWISE SPECIFIED:		NAME	DATE	TITLE: ASSEMBLY, SELF CONTAINED, AIR COOLED, FM120AC, 230V
DIMENSIONS ARE IN INCHES		DRAWN	SWC	
TOLERANCES:		CHECKED	TCM	PART NO. 20106-0X1
FRACTIONS ± 1/32		ENG APPR.	TCM	
ANG: MACH ± 0°30' BEND ± 2°		MFG APPR.	TCM	SIZE DWG. NO. REV B FM20106 01
DECIMALS .XX ± .01		Q.A.	EAS	
.XXX ± .005		PERP STRAIGHTNESS .003/IN		OLD PART NO. -
HOLE Ø .XX ± .005		FLATNESS .005/IN		
INTERPRET GEOMETRIC TOLERANCING PER: ASME Y14.5M		THREADS: EXTERNAL - CLASS 2A INTERNAL - CLASS 2B		SCALE: 1:36 WGT: 2340.03 LBS SHEET 1 OF 3
MATERIAL		MACHINED SURFACES: ✓ U.O.S		
NEXT ASSY	USED ON			
APPLICATION		DO NOT SCALE DRAWING		

2. PREFERRED LIMITS AND FITS PER ANSI B4.1 (INCHES).
1. DIMENSIONING & TOLERANCING PER ASME Y14.5M.
NOTES:

PRELIMINARY - UNRELEASED
CHANGES WILL NOT BE RECORDED
Wednesday, July 13, 2011

PART NUMBER	DESCRIPTION
20106-002	ASSEMBLY, SELF CONTAINED, AIR COOLED, FM120AC, 460V
20106-012	ASSEMBLY, SELF CONTAINED, AIR COOLED, FM120AC, 460V, WITH OPTIONAL HEAT



FLAGSHIP MARINE, INC.				
REV.	ZONE	DESCRIPTION	DATE	ENG APPROVAL

51	ZR144KC-TFD-950	CONDENSER, 3PH, 60 Hz, 460V	1	1
50	FM50040	-	6	6
49	8NWLOS	8-32 LOCK WASHER SS	24	24
48	8CNMES	8-32 MACHINE SCREW NUT SS	24	24
47	80165-002	WELDMENT, BASE, SELF CONTAINED, AIR COOLED, FM120AC	1	1
46	80158-001	WELDMENT, SHROUD PANEL, FAN, SELF CONTAINED, AIR COOLED, FM120AC	1	1
45	80059-001	WELDMENT, PANEL, LOUVER, SELF CONTAINED, AIR COOLED, UNIVERSAL	6	6
44	70589-001	FABRICATION, PANEL, ACCESS, CONTROL BOX, SELF CONTAINED, AIR COOLED, FM120AC	2	2
43	70588-001	FABRICATION, BRACKET, BLOWER, SELF CONTAINED, AIR COOLED, FM120AC	1	1
42	70587-001	FABRICATION, PLENUM, RETURN AIR, SELF CONTAINED, AIR COOLED, FM120AC	2	2
41	70586-001	FABRICATION, PLENUM, SUPPLY AIR, SELF CONTAINED, AIR COOLED, FM120AC	1	1
40	70585-001	FABRICATION, PANEL, BLOWER, SELF CONTAINED, AIR COOLED, FM120AC	1	1
39	70584-001	FABRICATION, PANEL, BIVECTOR, SELF CONTAINED, AIR COOLED, FM120AC	1	1
38	70583-002	FABRICATION, PANEL, CORNER, SELF CONTAINED, AIR COOLED, FM120AC	1	1
37	70583-001	FABRICATION, PANEL, CORNER, SELF CONTAINED, AIR COOLED, FM120AC	1	1
36	70582-002	FABRICATION, PANEL, CENTER, SELF CONTAINED, AIR COOLED, FM120AC	1	1
35	70582-001	FABRICATION, PANEL, CENTER, SELF CONTAINED, AIR COOLED, FM120AC	1	1
34	70581-002	FABRICATION, PANEL, CLOSEOUT, SELF CONTAINED, AIR COOLED, FM120AC	1	1
33	70581-001	FABRICATION, PANEL, CLOSEOUT, SELF CONTAINED, AIR COOLED, FM120AC	1	1
32	70580-001	FABRICATION, PANEL, ACCESS, SELF CONTAINED, AIR COOLED, FM120AC	2	2
31	70579-002	FABRICATION, PANEL, CORNER, SELF CONTAINED, AIR COOLED, FM120AC	1	1

30	70579-001	FABRICATION, PANEL, CORNER, SELF CONTAINED, AIR COOLED, FM120AC	1	1
29	70551-001	FABRICATION, LID, SELF CONTAINED, AIR COOLED, FM60AC	1	1
28	70456-101	FABRICATION, BRACKET, BLOWER 1XJY2, AIR HANDLER	4	4
27	70456-001	FABRICATION, BRACKET, BLOWER 1XJY2, AIR HANDLER	4	4
26	70169-001	FABRICATION, LID, ENCLOSURE, HEATER COIL, AIR CONDITIONER, FM48S - FM180S	-	2
25	70168-001	FABRICATION, ENCLOSURE, HEATER COIL, AIR CONDITIONER, FM48S - FM180S	-	2
24	70140-001	FABRICATION, MOTOR MOUNT, AIR HANDLER	4	4
23	60216-001	EVAPORATOR, 36000 MBTU, 17.50HX18.13W, 3 ROW	12	12
22	60131-001	GROMMET, 11/16" PUSH-IN LOCKING, NYLON	3	5
21	60071-001	STANDOFF, .385 ID X 1.406 OD X 1.00 THK, 70 DURO EPDM BLACK	14	14
20	60070-001	WASHER, .385 ID X 1.406 OD X .25 THK, 60 DURO EPDM BLACK	4	4
19	60062-001	THERMAL LIMIT SWITCH, 130 DEGREE	-	2
18	60060-001	THERMAL LIMIT SWITCH, 110 DEGREE	-	4
17	60035-002	HEATER ELEMENT, COIL, 74"L, 8MM, 4000W, 460VAC, DBL END THRD BULKHEAD	-	4
16	60029-001	MOTOR, FAN, PSC, 3/4 HP, 1075, 460V, 48YZ, TEAO	4	4
15	60027-001	CLAMP, T-BOLT BAND, 3/4" SS	4	4
14	60014-001	BLOWER, PSC, FORWARD CURVE, DIRECT DRIVE, WHEEL DIA 13"	2	2
13	50036-001	DETAIL, FAN HUB, HEX, 3/8IN SHAFT, AIR COOLED	2	2
12	4C903	FAN BLADE, 24IN DIA., 6360 CFM, 3/4 HP, PITCH 27 DEGREES	2	2
11	37NWLOS	3/8 LOCK WASHER SS	4	4
10	37N125WFES	3/8 X 1-1/4 FENDER WASHER SS	4	4
9	37CNFHS	3/8 HEX FINISH NUT SS	4	4
8	25NWLOS	1/4-20 LOCK WASHER SS	24	24
7	25CNFHS	1/4-20 MACHINE SCREW NUT SS	24	24
6	25C62HCSS	1/4-20 HEX CAP SCREW SS	8	8
5	25C150HCSS	1/4-20 HEX CAP SCREW SS	16	16
4	20035-001	ASSEMBLY, CONTROL BOX, SELF CONTAINED, AIR COOLED, UNIVERSAL	1	2
3	1131943	#8-18 X 1/2" HWH #3 PT SELF DRILLING SCREW, 410 SS	407	427
2	72396	#8-32 x 3/8" PHMS 18-8 SS	24	32
1	41424	RIVET 3/16" DIA .062-.125" GRIP RANGE, SSB62S STAINLESS	73	79

PRELIMINARY - UNRELEASED

CHANGES WILL NOT BE RECORDED Wednesday, July 23, 2014

ITEM NO.	PART NUMBER	DESCRIPTION	20106-002/QTY.	20106-012/QTY.
FLAGSHIP MARINE, INC. BILL OF MATERIALS				

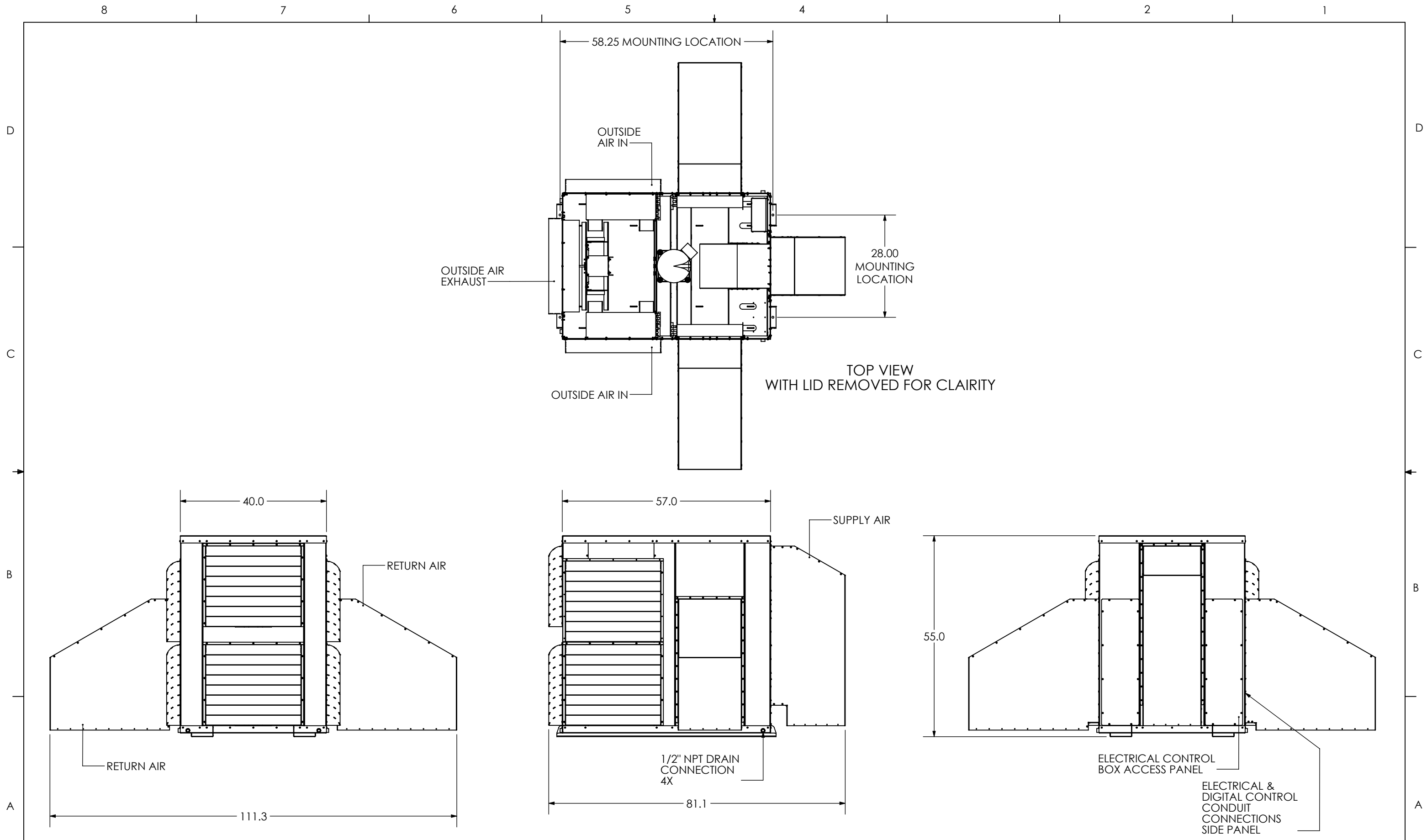
ITEM NO.	PART NUMBER	DESCRIPTION	20106-002/QTY.	20106-012/QTY.
FLAGSHIP MARINE, INC. BILL OF MATERIALS				

2. PREFERRED LIMITS AND FITS PER ANSI B4.1 (INCHES).
 1. DIMENSIONING & TOLERANCING PER ASME Y14.5M.
 NOTES:

FLAGSHIP MARINE, INC.
 2427 SE DIXIE HIGHWAY
 STUART | FLORIDA | 34996 | USA
 (772) 283-1609 | (800) 316-6426
 FAX (772) 283-4611

PROPRIETARY AND CONFIDENTIAL
 THIS DOCUMENT CONTAINS INFORMATION PROPRIETARY TO FLAGSHIP MARINE, INC. NO PART MAY BE REPRODUCED, USED IN ANY FORM, OR STORED ELECTRONICALLY WITHOUT THE WRITTEN PERMISSION OF FLAGSHIP MARINE, INC.

UNLESS OTHERWISE SPECIFIED: DIMENSIONS ARE IN INCHES TOLERANCES: FRACTIONS ± 1/32 ANG: MACH ± 0°30' BEND ± 2° DECIMALS .XX ± .01 .XXX ± .005 HOLE Ø .XX ± .005	DRAWN CHECKED ENG APPR. MFG APPR.	NAME SWC TCM TCM	DATE 10/16/2009 - -	TITLE: ASSEMBLY, SELF CONTAINED, AIR COOLED, FM120AC, 460V
INTERPRET GEOMETRIC TOLERANCING PER: ASME Y14.5M	Q.A.	EAS	-	PART NO. 20106-0X2
MATERIAL	PERP STRAIGHTNESS FLATNESS THREADS: EXTERNAL - CLASS 2A INTERNAL - CLASS 2B MACHINED SURFACES: ✓ U.O.S	∓ .003/IN ≡ .005/IN ≡ .005/IN	SIZE B	DWG. NO. FM20106
FINISH			REV 01	OLD PART NO. -
NEXT ASSY	USED ON			SCALE: 1:36 WGT: 2346.17 LB\$ SHEET 2 OF 3
APPLICATION	DO NOT SCALE DRAWING			



Flagship Marine
 Commercial Quality Factory Direct Prices
 2427 SE DIXIE HIGHWAY | STUART | FLORIDA | 34996 | USA
 (772) 283-1609 | (800) 316-6426 FAX (772) 283-4611

DRAWN	-
CHECKED	-
ENG APPR.	-

SIZE	DRAWING NO.	REV
B	FM20106	01
WGT: 2325.90 LBS	SCALE: 1:24	SHEET 3 OF 3