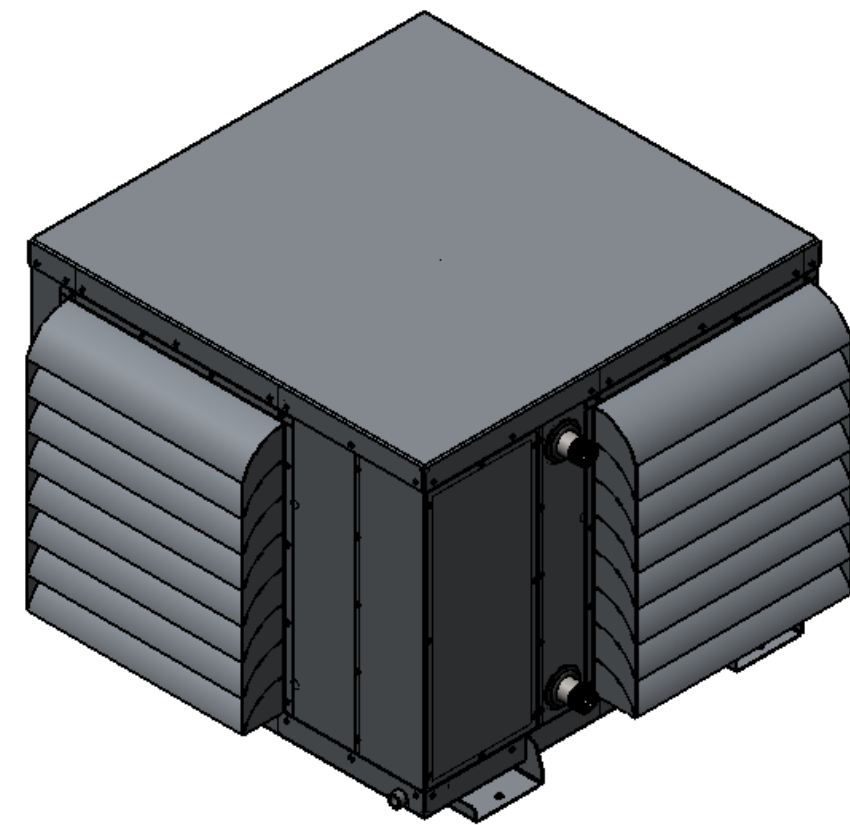


PART NUMBER	DESCRIPTION
20200-001	ASSEMBLY, AIR COOLED, CHILLER, FM60CWAC, 240V

FLAGSHIP MARINE, INC.				
REV.	ZONE	DESCRIPTION	DATE	ENG APPROVAL
01	-	INITIAL CHECK-IN	6/27/2012	-

2. PREFERRED LIMITS AND FITS PER ANSI B4.1 (INCHES).
 1. DIMENSIONING & TOLERANCING PER ASME Y14.5M.
 NOTES:



35	V6-414080-170	REVERSING VALVE LESS COIL, V6-414080-170, RANCO	1
34	HPC-104-S	FILTER DRIER, REVERSIBLE, LIQUID LINE, TYPE HPC-104-S, CATCH-ALL	1
33	FM60204	EVAPORATOR, CHILLED WATER, FM24CW & FM36CW	1
32	8C375MXPS	#8-32 x 3/8" PHMS 18-8 SS	12
31	70785-002	FABRICATION, PANEL, CORNER, INTAKE, AIR COOLED, CHILLER, FM60CWAC	1
30	70785-001	FABRICATION, PANEL, CORNER, INTAKE, AIR COOLED, CHILLER, FM60CWAC	1
29	80189-001	WELDMENT, BASE, AIR COOLED, CHILLER, FM60CWAC	1
28	70786-001	FABRICATION, PANEL, BIVECTOR, AIR COOLED, CHILLER, FM60CWAC	1
27	60156-001	GRILL, 3/8" WIRE SPACE, 4" CNTR PLATE, 11ga (.120) SPIRAL, (8).187 SPOKES 304SS, MT HOLES #8	1
26	80065-001	WELDMENT, PANEL, LOUVER, SELF CONTAINED, AIR COOLED, UNIVERSAL	3
25	4830K129		2
24	20016-011	ASSEMBLY, CONTROL BOX, SELF CONTAINED, A/C, SINGLE PHASE, WITH OPTIONAL HEAT, 48K-120K UNIVERSAL	1
23	60073-001	FAN, 3572CFM, 0.65inH2O, 0.66HP, 22/5-10/P3HR/30/PA/0.875/0.187/BR/JA	1
22	70787-001	FABRICATION, PANEL, ACCESS, AIR COOLED, CHILLER, FM60/120-V/180CWAC	1
21	70788-001	FABRICATION, PANEL, CLOSEOUT, AIR COOLED, CHILLER, FM60CWAC	3
20	70627-002	FABRICATION, BRACKET, EVAPORATOR, SELF CONTAINED, AIR COOLED, CHILLER UNIT, FM60CWAC	1
19	70784-002	FABRICATION, PANEL, CORNER, EXHAUST, AIR COOLED, CHILLER, FM60CWAC	1
18	70784-001	FABRICATION, PANEL, CORNER, EXHAUST, AIR COOLED, CHILLER, FM60CWAC	1
17	6359K37	GROMMET, SNAP-IN SEALING, 1.25" PIPE, FITS 1.62" TO 1.75" PIPE DIA.	2
16	60533-001	RIVET, 3/16" DIA. .062-.125" GRIP RANGE, SSB6-2S	51
15	60304-001	MOTOR, 2HP, 1730RPM, 1PH, 60HZ, 56HZ, 3528LC, TEFC, F1, 7/8" SHAFT	1
14	60260-001	COMPRESSOR, SCROLL, 1PH, 60 Hz, 208-230V	1
13	70781-001	FABRICATION, LID, AIR COOLED, CHILLER, FM60/120-V/180CWAC	1
12	60131-001	GROMMET, 1 1/8" PUSH-IN LOCKING, NYLON	8
11	70789-001	FABRICATION, PANEL, CORNER, ELECTRICAL CLOSEOUT, AIR COOLED, CHILLER, FM60/120-V/180CWAC	1
10	60071-001	STANDOFF, .385 ID X 1.406 OD X 1.00 THK, 70 DURO EPDM BLACK	4
9	60070-001	WASHER, .385 ID X 1.406 OD X .25 THK, 60 DURO EPDM BLACK	4
8	60216-001	EVAPORATOR, 36000 MBTU, 17.50HX18.13W, 4 ROW	3
7	4464K66	1 1/4" NPT COUPLING, 304 SS	2
6	37NWLOS	3/8 LOCK WASHER SS	8
5	37N125WFES	3/8 X 1-1/4 FENDER WASHER SS	8
4	37CNFHS	3/8 HEX FINISH NUT SS	8
3	80160-001	WELDMENT, SHROUD PANEL, FAN, AIR COOLED, CHILLER, FM60CWAC	1
2	20014-001	ASSEMBLY, ENCLOSURE, LOW VOLTAGE, CHILLERS	1
1	1131943	#8-18 X 1/2" HWH #3 PT SELF DRILLING SCREW, 410 SS	130

ITEM NO.	PART NUMBER	DESCRIPTION	20200-001/QTY.
----------	-------------	-------------	----------------

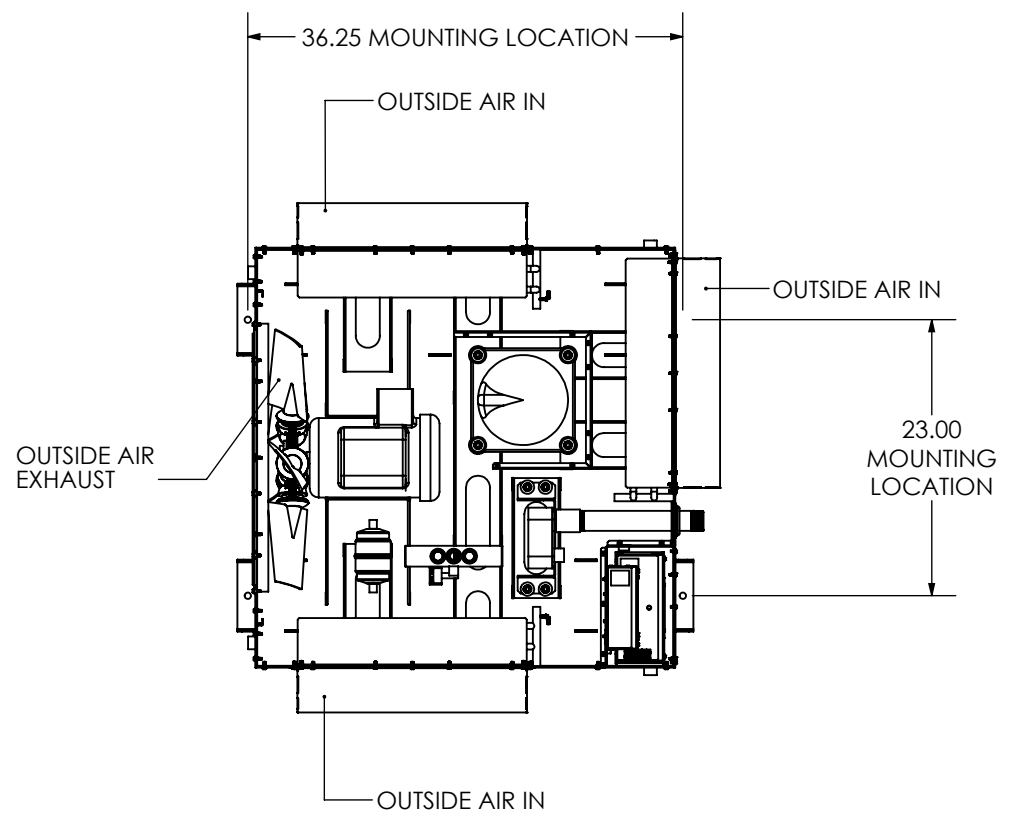
FLAGSHIP MARINE, INC. BILL OF MATERIALS

<p>FLAGSHIP MARINE, INC. 2427 SE DIXIE HIGHWAY STUART FLORIDA 34996 USA (772) 283-1609 (800) 316-6426 FAX (772) 283-4611</p> <p>PROPRIETARY AND CONFIDENTIAL THIS DOCUMENT CONTAINS INFORMATION PROPRIETARY TO FLAGSHIP MARINE, INC. NO PART MAY BE REPRODUCED, USED IN ANY FORM, OR STORED ELECTRONICALLY WITHOUT THE WRITTEN PERMISSION OF FLAGSHIP MARINE, INC.</p>	-	-	UNLESS OTHERWISE SPECIFIED: DIMENSIONS ARE IN INCHES TOLERANCES: FRACTIONS ± 1/32 ANG: MACH ± 0°30' BEND ± 2° DECIMALS .XX ± .01 .XXX ± .005 HOLE Ø .XX ± .005	DRAWN	SWC	10/16/2009	TITLE: ASSEMBLY, AIR COOLED, CHILLER, FM60CWAC, 240V PART NO. 20200-001
	-	-	INTERPRET GEOMETRIC TOLERANCING PER: ASME Y14.5M	CHECKED	TCM	-	
	-	-	MATERIAL	ENG APPR.	TCM	-	
	-	-	FINISH	MFG APPR.	TCM	-	
-	-	PERP STRAIGHTNESS .003/IN FLATNESS .005/IN THREADS: EXTERNAL - CLASS 2A INTERNAL - CLASS 2B MACHINED SURFACES: √ U.O.S	Q.A.	EAS	-	SIZE B DWG. NO. FM20200 REV 01 OLD PART NO. - SCALE: 1:16 WGT: 798.60 LBS SHEET 1 OF 2	
	NEXT ASSY	USED ON					
	APPLICATION		DO NOT SCALE DRAWING				

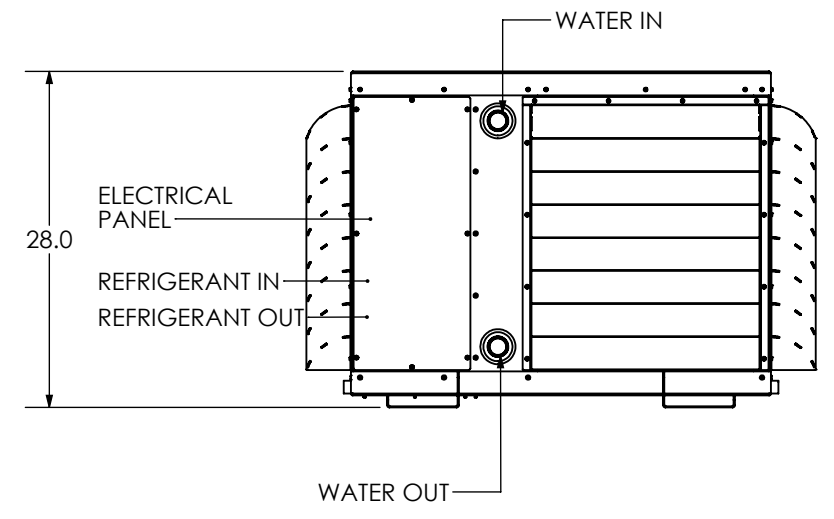
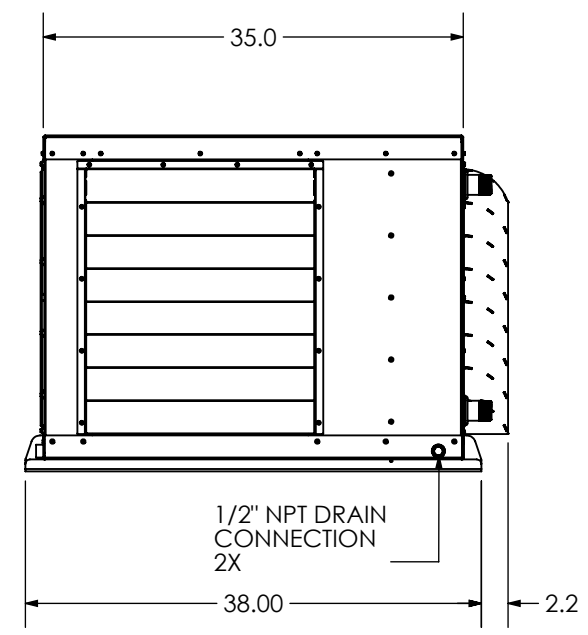
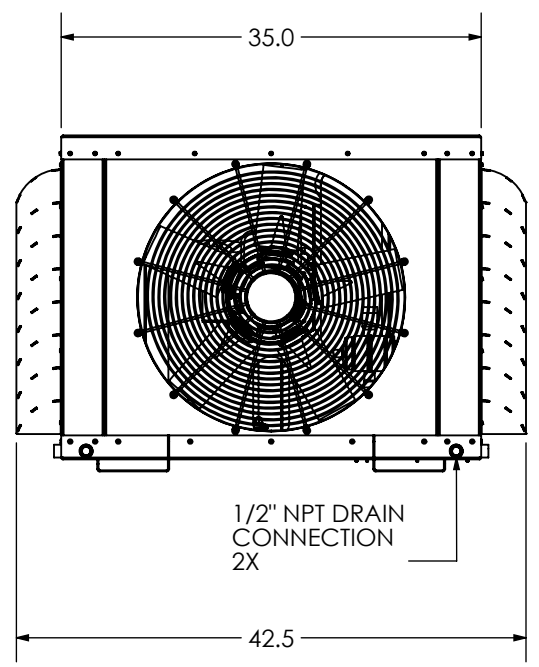
8 7 6 5 4 2 1


D
C
B
A

D
C
B
A



TOP VIEW
WITH LID REMOVED FOR CLAIRITY



 2427 SE DIXIE HIGHWAY STUART FLORIDA 34996 USA (772) 283-1609 (800) 316-6426 FAX (772) 283-4611	DRAWN -	SIZE B	DRAWING NO. FM20200	REV 01
	CHECKED -	WGT: 798.60 LBS	SCALE: 1:16	SHEET 2 OF 2
	ENG APPR. -			

8 7 6 5 4 3 2 1