



MARCH PUMPS

1819 PICKWICK AVE., GLENVIEW, IL 60026-1306, U.S.A
 PHONE: (847) 729-5300 - FAX: (847) 729-7062
 WWW.MARCHPUMP.COM

893 BRUSH

12 & 24 VDC

893-03, 893-04, 893-05, 893-06

DESCRIPTION:

Series 893 are centrifugal magnetic drive pumps, eliminating the need for a shaft seal. Models 893-04 & 893-06 are restricted to submersible operation. Pumps are serviceable with a screwdriver. See the parts list for a breakdown of parts.

OPERATION:

Pumps are not self-priming, lack a suction lift, and thus require a **flooded suction**. Pumps **cannot be run dry** because the impeller requires the liquid being pumped for lubrication. For application assistance, contact March Pump.

ELECTRICAL:

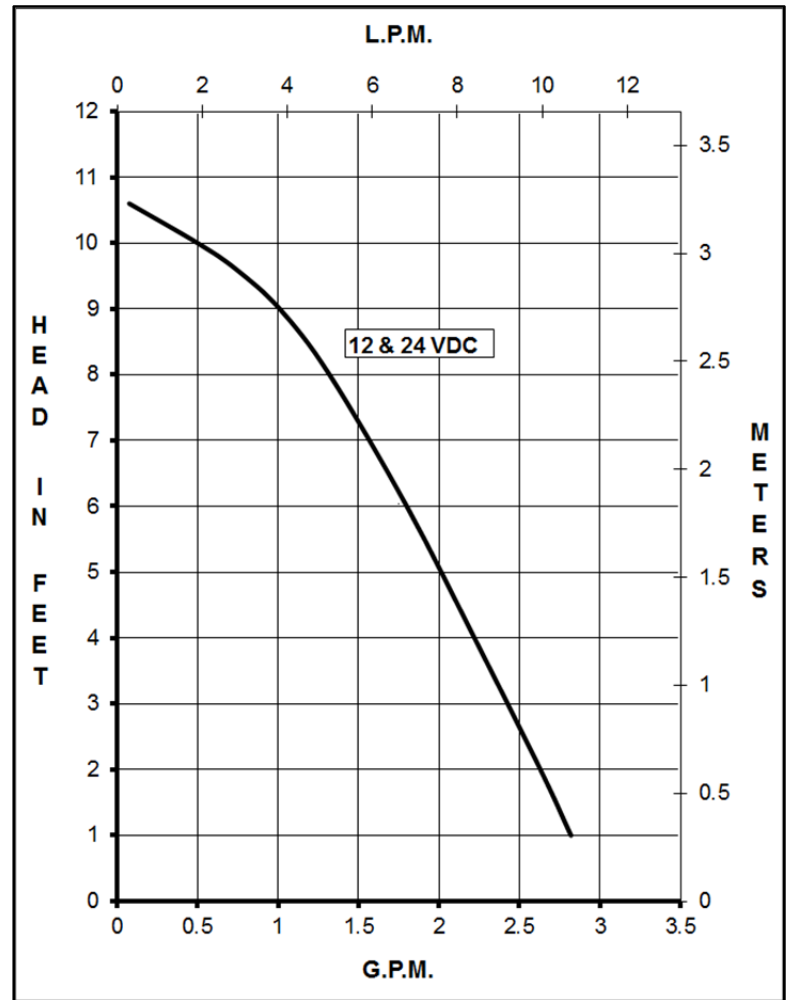
Motors are a brush type DC.

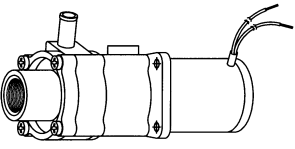
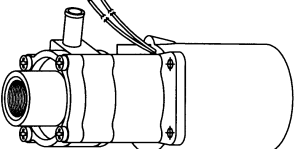
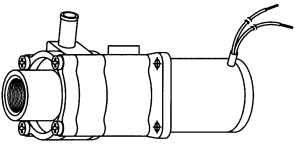
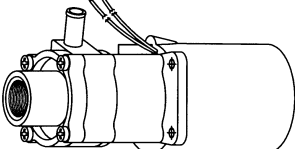
Red lead is positive, blue lead is negative.

893-03, 893-04, 893-05, 893-06 motors have 20" (50 cm) leads.

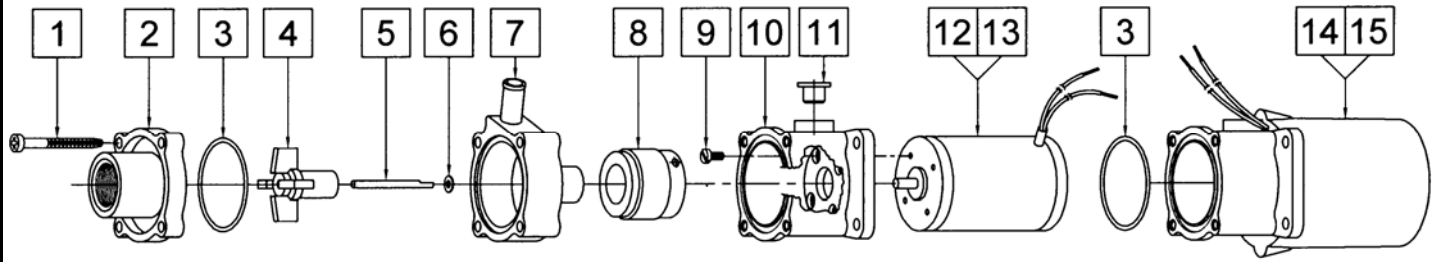
LIMITED WARRANTY:

March pumps are guaranteed only against defects in workmanship or materials pumping water. The brush type motors used on 03, 04, 05 & 06 have a rated brush life of 2,800 hours. They are warranted for 2,800 hours or 12 months, whichever comes first. For the complete warranty and register online go to www.marchpump.com/warranty-registration



MODELS & SPECIFICATIONS	893-03					893-04					893-05					893-06																			
		Open Air										Submersible Only										Open Air										Submersible Only			
Product #	0893-0001-0300					0893-0001-0400					0893-0001-0500					0893-0001-0600																			
Max Flow	2.7 gpm - 11 lpm					2.7 gpm - 11 lpm					2.7 gpm - 11 lpm					2.7 gpm - 11 lpm																			
Max Head	10.6 ft / 4.5 psi - 3.3 m					10.6 ft / 4.5 psi - 3.3 m					10.6 ft / 4.5 psi - 3.3 m					10.6 ft / 4.5 psi - 3.3 m																			
Inlet	3/8" FPT					3/8" FPT					3/8" FPT					3/8" FPT																			
Outlet	3/8" OD					3/8" OD					3/8" OD					3/8" OD																			
Max Internal Pressure	50 psi - 344 kPa					50 psi - 344 kPa					50 psi - 344 kPa					50 psi - 344 kPa																			
Max Liquid Temperature	190 °F open air 87 °C open air					120 °F sub 49 °C sub					190 °F open air 87 °C open air					120 °F sub 49 °C sub																			
Packed Weight	1.00 lbs / 0.45 kg					1.20 lbs / 0.54 kg					1.00 lbs / 0.45 kg					1.20 lbs / 0.54 kg																			
ELECTRICAL	A	W	Hp	kW	Rpm	A	W	Hp	kW	Rpm	A	W	Hp	kW	Rpm	A	W	Hp	kW	Rpm															
12 V	1	12	1/150	0.004	4000	1	12	1/150	0.004	4000																									
24 V											.5	12	1/150	0.004	4000	.5	12	1/150	0.004	4000															
Overall Size	Height	Width	Length	Height	Width	Length	Height	Width	Length	Height	Width	Length	Height	Width	Length	Height	Width	Length	Height	Width	Length														
	2.52"	2.19"	5.01"	2.79"	2.66"	5.11"	2.52"	2.19"	5.01"	2.79"	2.66"	5.11"	2.52"	2.19"	5.01"	2.79"	2.66"	5.11"	2.52"	2.19"	5.01"														
	6.4 cm	5.5 cm	12.7 cm	7.0 cm	6.7 cm	12.9 cm	6.4 cm	5.5 cm	12.7 cm	7.0 cm	6.7 cm	12.9 cm	6.4 cm	5.5 cm	12.7 cm	7.0 cm	6.7 cm	12.9 cm	6.4 cm	5.5 cm	12.9 cm														
Materials in Contact With Solution	Noryl, Nylon, Carbon/Teflon, Buna N, 316 Stainless Steel, Ceramic Magnet.																																		
	When pump is submerged the following additional materials are in contact: Epoxy, Delrin, & Motor Leads																																		
All specifications & data are based on pumping water & are intended as a guideline only. Specifications may vary with different motors.																																			

PARTS LIST



#	DESCRIPTION	MATERIAL	SIZE (Inches)	QTY.	893-03	893-05
1	Screws, Self-Tapping	Stainless	#7-19 x 1-7/16 Lg.	4	0115-0062-1000	
2	Cover	Noryl	3/8 FPT Inlet	1	0893-0004-1000	
3	"O" Ring	Buna N	1/16 CS x 1-7/16 OD	1	0115-0018-1000	
4	Impeller	Nylon/Ceramic Magnet		1	0115-0008-0100	
5	Shaft	316 Stainless		1	0115-0032-1000	
6	Thrust Washer (Rear)	Carbon/Teflon		1	0115-0033-1000	
7	Rear Housing	Noryl	3/8 OD Outlet	1	0893-0003-1000	
8	Drive Magnet			1	0115-0101-0100	
9	Screws	Stainless	#4-40 x 1/4 Lg.	4	0893-0016-1000	
10	Motor Bracket	Plastic		1	0893-0002-1000	
11	Plug	Plastic		1	0125-0110-1000	
12	Motor 12 VDC Brush			1	0893-0001-1000	
13	Motor 24 VDC Brush			1		0893-0022-1000
#	DESCRIPTION	MATERIAL	SIZE (Inches)	QTY.	893-04	893-06
1	Screws, Self-Tapping	Stainless	#7-19 x 1-7/16 Lg.	4	0115-0062-1000	
2	Cover	Noryl	3/8 FPT Inlet	1	0893-0004-1000	
3	"O" Ring	Buna N	1/16 CS x 1-7/16 OD	2	0115-0018-1000	
4	Impeller	Nylon/Ceramic Magnet		1	0115-0008-0100	
5	Shaft	316 Stainless		1	0115-0032-1000	
6	Thrust Washer (Rear)	Carbon/Teflon		1	0115-0033-1000	
7	Rear Housing	Noryl	3/8 OD Outlet	1	0893-0003-1000	
8	Drive Magnet			1	0115-0101-0100	
14	Encapsulated Assy. 12 VDC Brush			n/a	Not Available	
15	Encapsulated Assy. 24 VDC Brush			n/a		Not Available

NOTE: Contact Factory for other materials and/or parts not listed.