



MARCH PUMPS

1819 PICKWICK AVE., GLENVIEW, IL 60026-1306, U.S.A
 PHONE: (847) 729-5300 - FAX: (847) 729-7062
 WWW.MARCHPUMP.COM

DESCRIPTION:

The LC-3M-MD is a centrifugal magnetic drive pump, eliminating the need for a shaft seal. Pumps are serviceable with a screwdriver. The "LC" is hermetically encapsulated and liquid cooled which allows the pump to be run fully submerged or in open air for complete moisture protection. It is rated IP 67.

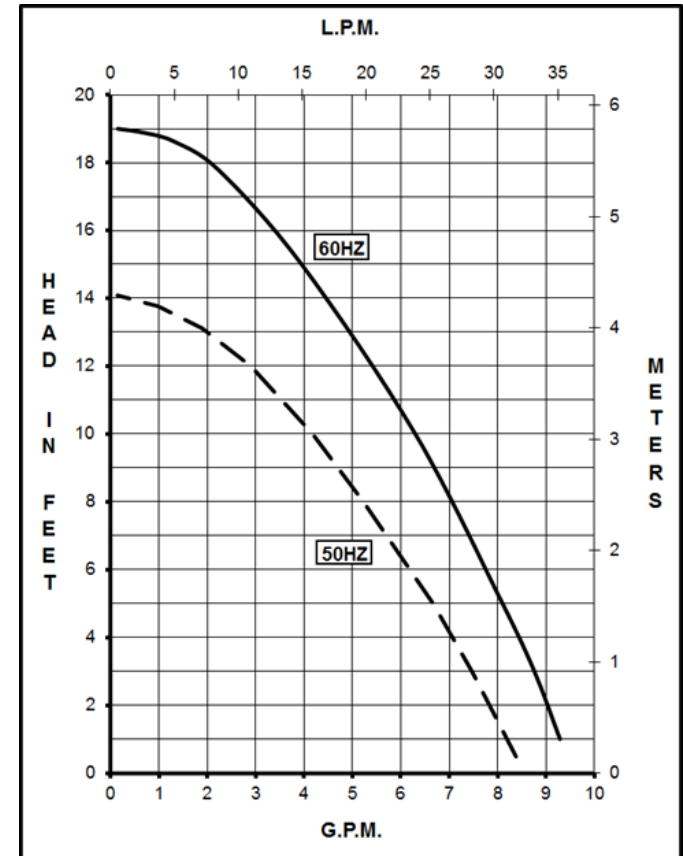
OPERATION:

The LC-3M-MD is not self-priming, lack a suction lift, and thus require a **flooded suction**. Pumps **cannot be run dry** because the impeller requires the liquid being pumped for lubrication. For liquids with a specific gravity greater than water, have a higher viscosity, or for elevated temperatures, a trimmed impeller may be necessary. For application assistance, contact March Pump.

ELECTRICAL:

Motors are available in different electrical configurations such as 1 Phase 115 Volt 50/60 Hz or 230 Volt 50/60 Hz. The motors are not dual voltage. The motors are U.L. listed and rated as continuous duty. Models have a 6 foot (1.8 m) cord. The LC-3M-MD is Ignition Protected per SAE J1171 and ISO 8846.

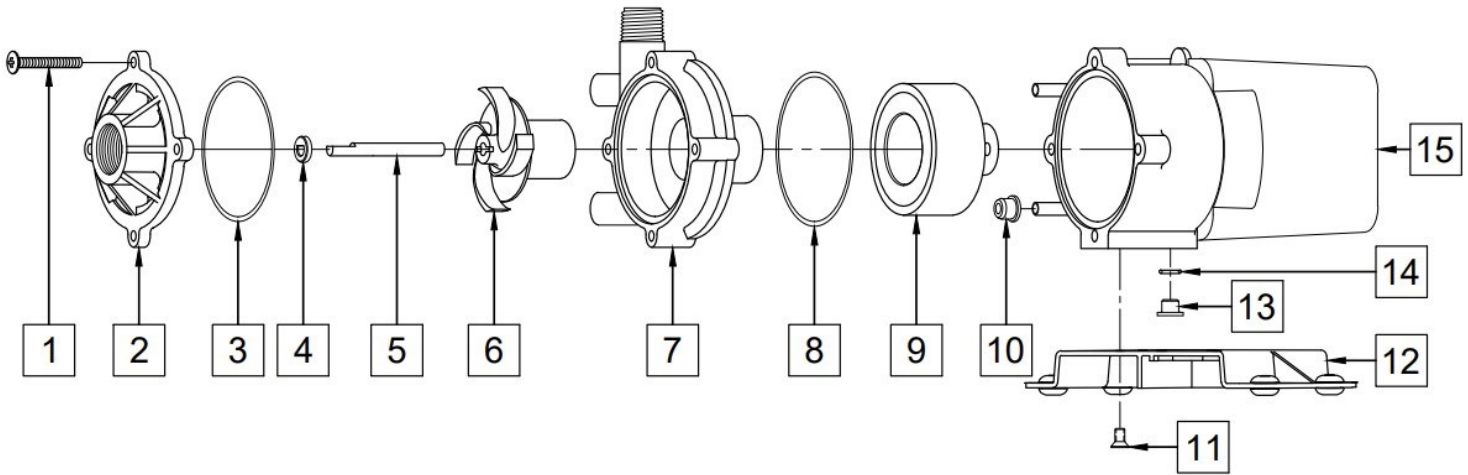
LC-3M-MD



Specifications		LC-3M-MD
Product	115V	0130-0177-0100
	230V	0130-0178-0100
Inlet-Outlet		3/4" FPT-1/2" MPT
Max Internal Pressure		25PSI (172kPa)
Max Liquid Temperature		130F (54C)

Model	60Hz												50Hz										
	Max Flow		Max Head			Electrical							Max Flow		Max Head			Electrical					
	GPM	LPM	Feet	PSI	M	Ph	Voltage	Amperage	HP	kW	RPM	GPM	LPM	Feet	PSI	M	Ph	Voltage	Amperage	HP	kW	RPM	
LC-3M-MD	8.5	32.2	19	8.2	5.8	1	115 or 230	2.0 or 1.0	1/20	0.037	3450	8.2	31	14.1	6.1	4.3	1	115 or 230	2.3 or 1.0	1/20	0.037	2850	

All specifications & data are based on pumping water & are intended as a guideline only. Specifications may vary with different motors.



LC-3M-MD

Item	Part Number	QTY REQ	Description
1	0823-0008-1000	4	#10-32 x 1-1/2" Long Screw (Stainless)
2	0130-0021-1000	1	Cover with 3/4" FPT (Polypropylene)
3	0130-0011-1000	1	3/32"CS x 2-13/16"OD "O" Ring (Buna N)
4	0130-0028-1000	1	Thrust Washer (Ceramic)
5	0130-0176-1000	1	3 Flat Shaft (316 Stainless Steel)
6	0130-0165-0200	1	Impeller with Carbon Bushing and Bare Ceramic Magnet (Polypropylene)
7	0130-0019-0100	1	Rear Housing with 1/2" MPT & Plug Assembly
8	0130-0025-1000	1	3/32"CS x 3" OD Bracket "O" Ring (Buna N)
9	0130-0043-0200	1	Drive Magnet
10	0125-0007-1000	2	Cooling Tube Seal (Buna N)
11	0130-0146-1000	2	Pan Head #10-32 x 1/2" Long Base Screw (Stainless Steel)
12	0125-0113-0100	1	Marine Base w/Grommets (Polypropylene)
13	0125-0110-1000	1	Plug for Motor Bracket
14	0210-0008-1000	1	1/16"CS x 7/16" OD "O" Ring (Viton)
15	Not Available	1	LC Epoxy Motor, Bracket, Cord Assembly

NOTE: Contact Factory for other materials and/or parts not listed.

Special voltage motors are available upon special order.

Materials in contact with the liquid: LC-3CP-MD: Polypropylene, Cupric Nickel, Buna N, Ceramic, 316 Stainless Steel, Carbon, Ceramic Magnet.

When Submerged: Epoxy, Stainless Steel, Noryl and Cord.

LIMITED WARRANTY: March pumps are guaranteed only against defects in workmanship or materials for a period of one year from date of manufacture pumping water.
For the complete warranty and to register online go to www.marchpump.com/warranty-registration

For the General Installation Manual, see this link <https://www.marchpump.com/wp-content/uploads/2019/07/march-pump-general-installation-guide-0750-040.pdf>
Or Scan QR Code



0130-0179-1000